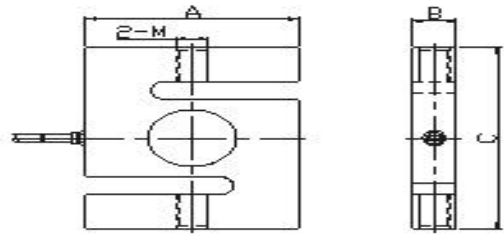
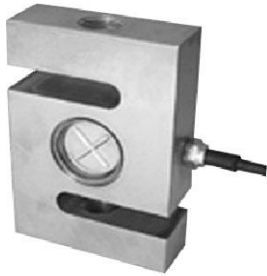


Load Cell Model BSS

Material: Alloy steel /stainless steel

Outline



Capacity		Size: mm			Thread	
Lb	Kg	A	B	C	mm	Inch
25~100	5~50	13	64	51	M8*1.25	1/4-28
200~1.5K	100~500	19.1	76	51	M12*1.75	1/2-20
2K, 3K, 4K	1T~2T	25.4	76	58	M18*1.5	3/4-16
5K, 10K	2.5T, 3T, 5T	25.4	108	76	M18*1.5	3/4-16
20K	10T	51	178	127	M30*2	1-1/4-12
40K	20T	60	188	140	M39*2	1-1/2-12

Maim Dimensions and Specifications :

Comprehensive Error	0.05	
Output Sensitivity (mV/V)	2.0±0.01 (BSS-1)	3.0±0.01 (BSS-2)
Nonlinearity (%F.S)	±0.02	
Repeatability (%F.S)	±0.01	
Hysteresis (%F.S)	±0.02	
Creep (%F.S/30min)	±0.02	
Temp. Effect on Zero (%F.S/10℃)	±0.02	
Temp. Effect on Output (%F.S/10℃)	±0.02	
Zero Output (%F.S)	±2	
Input Resistance (Ω)	380±10	
Output Resistance (Ω)	350±3	
Insulation Resistance (MΩ)	≥5000	
Excitation Voltage (V)	9—12(DC)	6--18(DC)
Operation Temp Range (℃)	-10--+50	-20--+60
Overload Capacity (%F.S)	150	
Capacity	25—100,200—1.5K,2K,3K,4K,5K,10K,20K,40KLb 5—50kg,100—500kg, 1—2t,2.5t,3t,5t,10t,20t	
Material	Alloy steel	
Protectio	IP67	
Recommended Applications	Industrial sesnsor	