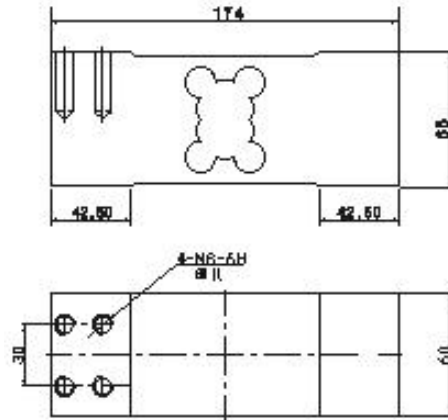
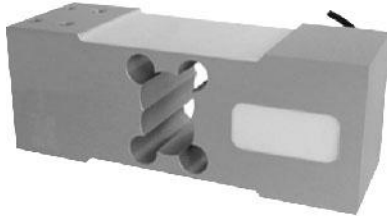


Load Cell Model FAV--174

Material: Aluminum

Outline



Capacity:
50, 100, 150, 200, 250, 300
500, 600kg

Specifications

| | | |
|--------------------------|--------------|--|
| Comprehensive Error | | 0.02 |
| Output Sensitivity | (mV/V) | 2.0 ± 0.1 |
| Nonlinearity | (%F.S) | ± 0.02 |
| Repeatability | (%F.S) | ± 0.01 |
| Hysteresis | (%F.S) | ± 0.02 |
| Creep | (%F.S/30min) | ± 0.015 |
| Temp. Effect on Zero | (%F.S/10°C) | ± 0.02 |
| Temp. Effect on Output | (%F.S/10°C) | ± 0.02 |
| Zero Output | (%F.S) | ± 2 |
| Input Resistance | (Ω) | 410 ± 10 |
| Output Resistance | (Ω) | 350 ± 3 |
| Insulation Resistance | (MΩ) | ≥ 5000 |
| Excitation Voltage | (V) | 9—12 (DC) (FAV-174-1) 6—18 (DC) (FAV-174-2) |
| Operation Temp Range | (°C) | -20--+60 |
| Overload Capacity | (%F.S) | 150 |
| Capacity | (kg) | 50,75,100,150,200,250,300,500,630,1000 |
| Material | | Aluminun alloy |
| Protection | | IP65 |
| Recommended Applications | | Platfort scale sensor |

Note: All Specifications Subject To Change Without Notice & Custom-made Products Are Available.